



US00D499385S

(12) **United States Design Patent** (10) **Patent No.:** **US D499,385 S**
Ishida (45) **Date of Patent:** **** Dec. 7, 2004**

(54) **LIGHT EMITTING DIODE** D478,877 S * 8/2003 Hoshiba D13/182
D482,337 S * 11/2003 Kamada D13/182

(75) **Inventor:** **Masashi Ishida, Anan (JP)**

FOREIGN PATENT DOCUMENTS

(73) **Assignee:** **Nichia Corporation, Anan (JP)**

JP D984224 7/1997

(**) **Term:** **14 Years**

OTHER PUBLICATIONS

(21) **Appl. No.:** **29/192,597**

Surface Mount Type LED—Light Emitting Diode, Product Guide, Jan. 2001, 6 pages, Cat. No. 01033K, Nichia Corporation, Japan.

(22) **Filed:** **Oct. 28, 2003**

* cited by examiner

Related U.S. Application Data

(63) Continuation of application No. 29/159,905, filed on May 1, 2002.

Primary Examiner—Philip S. Hyder
Assistant Examiner—Selina A Sikder
(74) *Attorney, Agent, or Firm*—Smith Patent Office

(51) **LOC (7) Cl.** **13-03**

(52) **U.S. Cl.** **D13/180**

(58) **Field of Search** D10/104, 114;
D13/180, 182; D26/37; 174/52.2; 257/79,
88, 89, 93–96, 91, 98, 99, 100, 432, 433,
434, 678, 684, 698; 313/499, 500; 362/35,
226, 249, 287, 294, 800

(57) **CLAIM**

I claim the ornamental design for a light emitting diode, as shown and described.

(56) **References Cited**

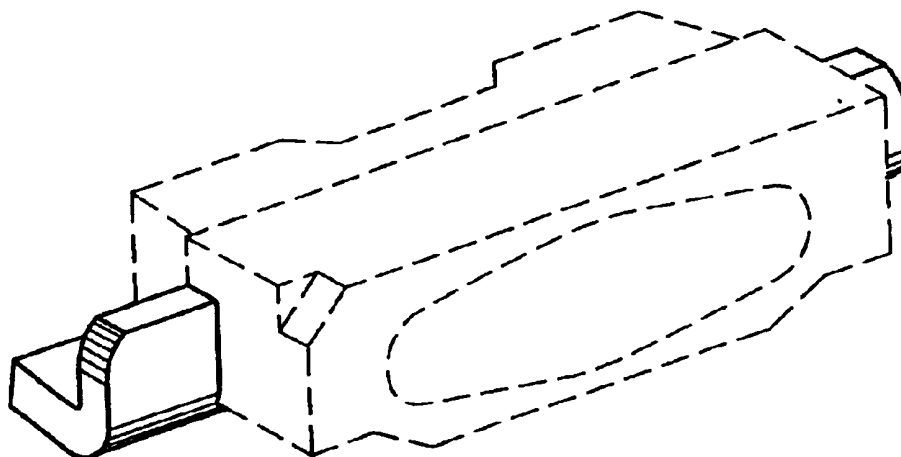
U.S. PATENT DOCUMENTS

4,152,624 A	5/1979	Knaebel	
4,466,050 A *	8/1984	Lockard	362/307
4,959,761 A	9/1990	Critelli et al.	
D312,979 S	12/1990	Oesterheld et al.	
D314,919 S	2/1991	Villar	
5,045,895 A	9/1991	Yoshida et al.	
5,226,053 A	7/1993	Cho et al.	
5,325,271 A *	6/1994	Hutchisson	362/555
5,528,079 A *	6/1996	McIver	257/698
RE36,614 E	3/2000	Lumbard et al.	
D432,095 S	10/2000	Seeger et al.	
D437,798 S	2/2001	Kiba et al.	
D439,351 S	3/2001	Kiba et al.	
6,315,432 B1	11/2001	Kuo	
D453,745 S	2/2002	Suenaga	

DESCRIPTION

FIG. 1 is a perspective view of the light emitting diode showing my new design;
FIG. 2 is a top plan view of the light emitting diode according to FIG. 1;
FIG. 3 is a left side elevational view of the light emitting diode according to FIG. 1;
FIG. 4 is a front elevational view of the light emitting diode according to FIG. 1;
FIG. 5 is a right side elevational view of the light emitting diode according to FIG. 1;
FIG. 6 is a bottom plan of the light emitting diode according to FIG. 1; and,
FIG. 7 is a rear elevational view of the light emitting diode according to FIG. 1.
The broken line showing of the environment is for illustrative purpose only and forms no part of the claimed design.

1 Claim, 2 Drawing Sheets



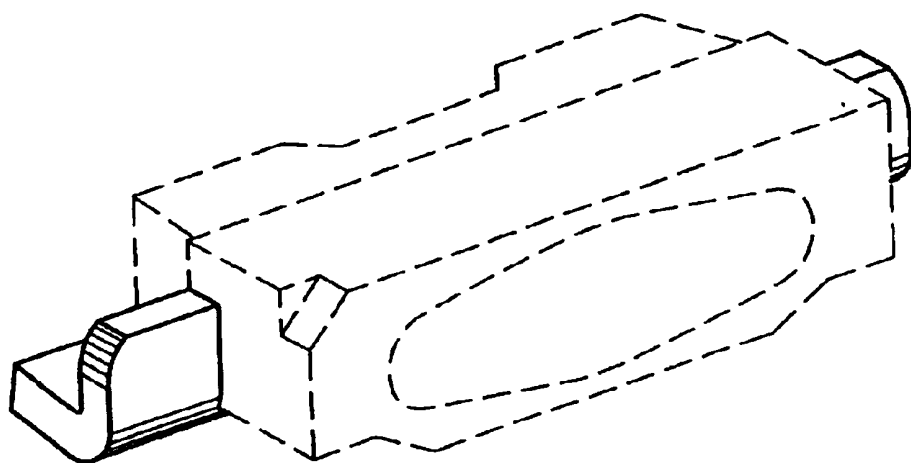


FIG. 1

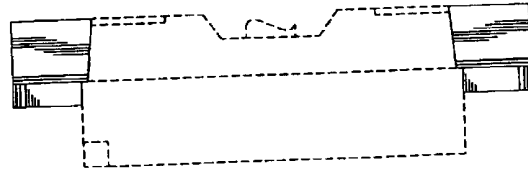


FIG. 2

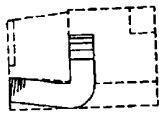


FIG. 3

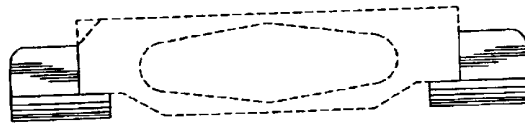


FIG. 4

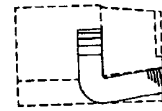


FIG. 5

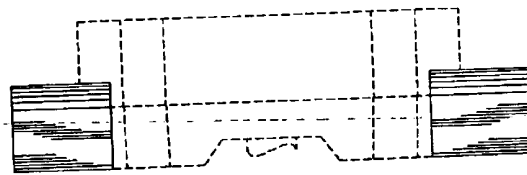


FIG. 6

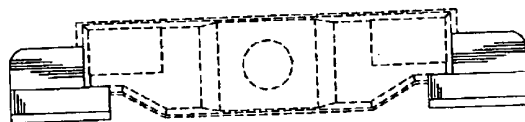


FIG. 7